



**UNIVERSITY OF NAIROBI
COLLEGE OF HUMANITIES AND SOCIAL SCIENCES
SCHOOL OF LAW, KISUMU CAMPUS**

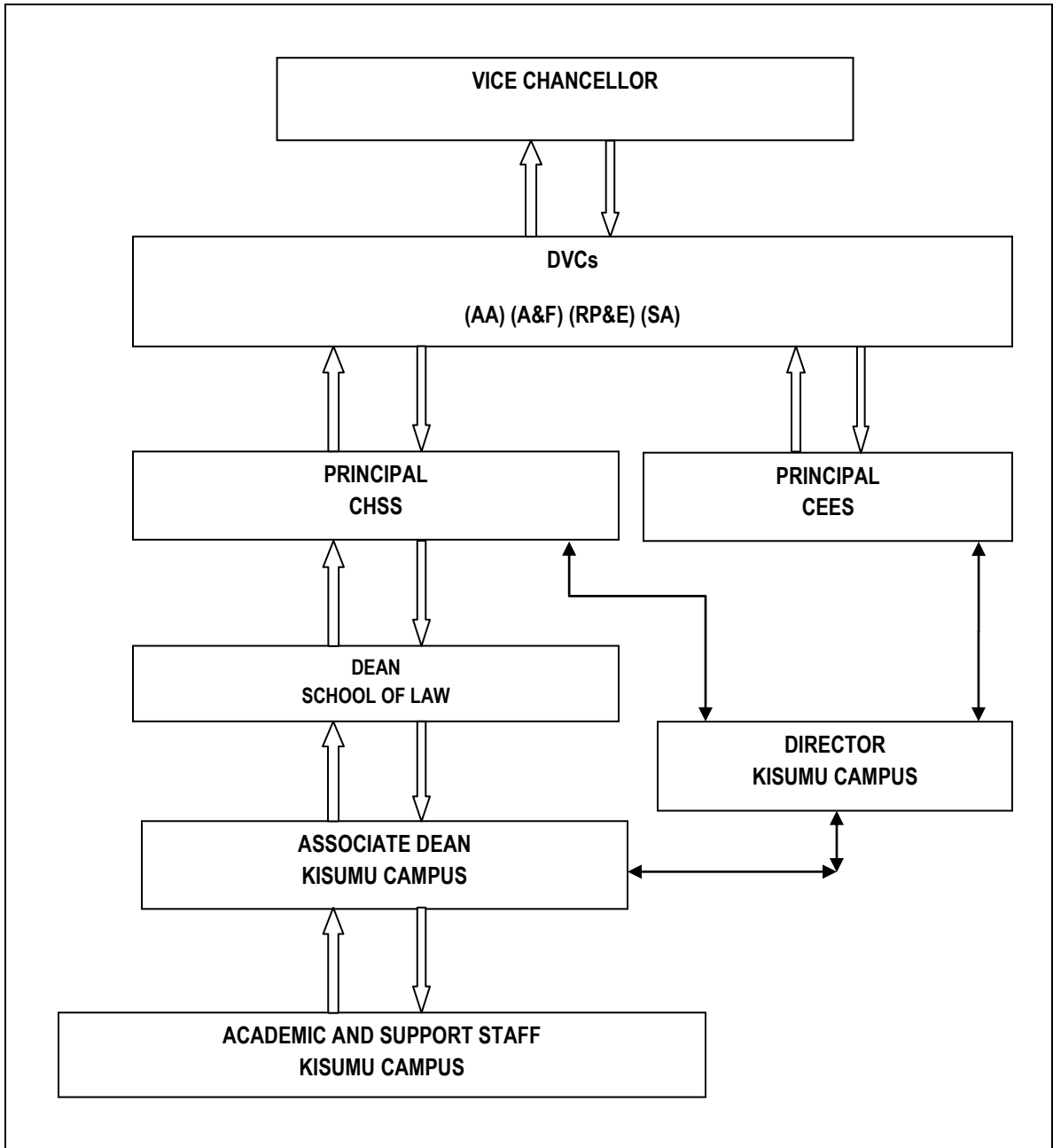
APPENDIX 22

ORGANOGRAM OF CURRENT INTERNAL ACADEMIC AND ADMINISTRATIVE STRUCTURE

**By: SCHOOL OF LAW - KISUMU
CAMPUS**

Prepared By: ASSOCIATE DEAN

Date of Issue: February 15, 2016



LEGEND:

- ↑ - Reporting Responsibility (Academic and Administrative)
- ↓ - Supervisory Authority (Academic and Administrative)
- ↕ - Campus Administration (currently working with (i) an *informal 'directorate'* of the Campus Director, Associate Dean (School of Law), Resident Lecturer (Extra-Mura Centre) and Assistant Dean of Students (Kisumu Campus), (ii) a *wider administrative body* composed of all heads of units, and (iii) a *general body* composed of all administrative/support staff)